

KEW

株式会社

國

森



KUNIMORI ENGINEERING WORKS CO., LTD.

COMPANY PROFILE

Company profile

Corporate Name	KUNIMORI ENGINEERING WORKS CO.,LTD.	
Founded	October 1, 1966	
Address	<p>Head Office 2-15, 2-CHOME, MEIWADORI, HYOGO-KU, KOBE CITY, HYOGO, 652-0883, JAPAN TEL:(81)78-686-0320 / FAX:(81)78-686-0332 / E-mail:kew-kbsls@kunimori.co.jp</p> <p>Tokyo Office 7-12, 5-CHOME, SHINBASHI, MINATO-KU, TOKYO, 105-0004, JAPAN TEL:(81)3-3437-5022 / FAX:(81)3-3437-5322 / E-mail:kew-tksls@kunimori.co.jp</p> <p>Singapore Branch 101 CECIL STREET, #16-02 TONG ENG BUILDING, SINGAPORE 069533 TEL:(65)6226-0321 / FAX:(65)6226-0387 / E-mail:kew-sgp@kunimori.co.jp</p> <p>Manila Office ROOM NO.501, SANKO LINE BUILDING, 1631 SAN MARCELINO ST. MALATE, MANILA, PHILIPPINES 1000 TEL:(63)2-524-1806 / FAX:(63)2-524-1077 / E-mail:kew-mnl@kunimori.co.jp</p> <p>Shanghai Office Room 507, Shanda Building, No. 196, New JinQiao Road, Pudong, Shanghai 201206 China TEL / FAX:(86)21-58600301 / E-mail:shanghai@kunimori.co.jp</p>	
Capital	20 million yen	
Board Members	<p>President YOSHIKI ISHIHARA</p> <p>Managing director KIYOHISA SAITOH</p> <p>Director YOSHIHIRO TOYOSAWA</p> <p>Director SHIRO KINUGASA</p> <p>Director TOSHIKI ISHIHARA</p> <p>Director SEIJIROU ONOMOTO</p> <p>Director YUJI SHIOTA</p> <p>Auditor KAORU ARIKUNI</p>	
Employees	60	
Business Lines	<p>Supply of all kinds of Equipment & Parts for vessels'use.</p> <p>Repair of Main Engine, Generator Engine and all other Auxiliary Machinerics for vessels'use.</p> <p>Broker for ship docking etc.</p>	

COMPANY PROFILE

Philosophy

MANAGEMENT PRINCIPLE

Contribution to Society and Fair Job Performance,
conforming to a social norm-that's our mission as person as well as a company.

BUSINESS POLICY

Prompt and Precise Service, Sincerity and Endeavor and Solid Management,
to attain the best and brighten Company even though small.

ORGANIZATIONAL STRUCTURE

HEAD OFFICE

Overseas Sales Dept., Kobe Sales Dept., Operation Dept.,
Repair & Technical Service Dept.(Kobe Group),
General Affairs Dept.

TOKYO OFFICE

Tokyo Sales Dept., China Project Office,
Repair & Technical Service Dept.(Tokyo Group)

Overseas

Singapore Branch, Manila office, Shanghai office

COMPANY PROFILE

History

1938	Toranosuke Kunimori went into private practice with the aim of manufacturing and repairing of Refrigeration Plant and Marine Main & Auxiliary Engines and incorporated the business KUNIMORI MANUFACTURING Co., Ltd.
1958	Involved in the business corporation with M.E.S. Co.,Ltd. on sales of ROTASCO Refrigeration Plant.
1965	Dissolution of the above business corporation with M.E.S. Co.,Ltd. due to various factors.
1966(Jan)	Sousuke Kunimori went into private practice with the aim of the maintenance of Kunimori Type Refrigeration Plant onboard several hundred vessels.
1966(Oct)	Incorporated KUNIMORI REINETSU KOGYO Co., Ltd. capitalized at ¥800,000-.
1967(Aug)	Changed the corporate name to KUNIMORI MANUFACTURING Co., Ltd.
1968(Oct)	Opened Osaka Office.
1969(May)	Opened Parts Sales Department to expand the business in supplying various Spare Parts for ship's use.
1971(Feb)	Opened Tokyo Office.
1971(Oct)	Increased the capital fund to ¥3,200,000-.
1974(Dec)	Increased the capital fund to ¥8,000,000-.
1981(Dec)	Increased the capital fund to ¥12,000,000-.
1986(Jul)	Closed Osaka Office because of withdrawal and closure of shipbuilding yards in Osaka area.
1991(Apr)	Changed the company name to Kunimori Engineering Works Co., Ltd.
1996(Jan)	Opened Cebu Office, Philippines.(2006 Closed)
1996(Nov)	Yoshiki Ishihara becomes President.
1997(Jan)	Opened Manila Office, Philippines.
2006(Jan)	Succeeded to all business of Sanko Ship Management Co.,Ltd., Kobe Office due to closure of the said Office.
2006(Jan)	Moved Kobe Head Office to Kobe Senyohin Center in Port Island.
2006(Dec)	Increased the capital fund to ¥20,000,000-
2006(Dec)	Opened Singapore Office.
2008(Sept)	Moved Manila Office to the present address.
2010(Oct)	Upgraded Singapore Office to Branch Office.
2011(Jul)	Moved Tokyo Office to the present address.
2012(Jul)	Moved Head Office to the present address having larger warehouse facility.
2012(Nov)	Began Chinese Business.
2013(Apr)	Opened Shanghai Office.

BUSINESS

Handling Items

Deck Department

- Deck Machinery
- Anticorrosion Anode/ Marine Growth Prevention System
- Life Boat/Life-Saving Raft
- Galley Equipment/ Doors for Accomodation Rooms

Electrical Department

- Control System & Equipment
- Measuring Instrument

Repair Service

- Not only repairs for refrigerator and air conditioner but also general repair, special repair, and renewal of Engine parts by our technology in collaboration with domestic and international associated companies.

Engine Department

- Main Engine
- Shafting/Propeller
- Main & Auxiliary Boiler/ Incinerator
- Air Compressor
- Heat Exchanger/Heater/Fresh Water Generator

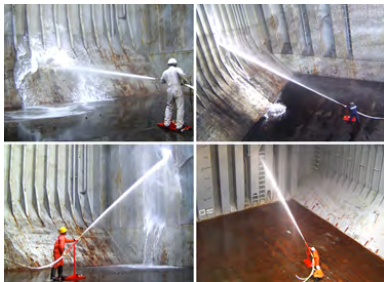
Special Items

- CARGO HOLD CLEANING MACHINE-VULCAN PUMP (BC TAECHANG)
- WATER BLASTER(BC TAECHANG)
- GARBAGE COMPACTOR(HASSWELL)
- SMART SOUNDING SCALE(SEMCO)
- BALLAST WATER MANAGEMENT SYSTEM(BSKY)
- CORROGLASS(CORROCOAT JAPAN)
- MGO ADDITIVE AND SPESIAL PAINTS (ACE INTERNATIONAL)
- CERAMIC BOARD(SUNFLAME)
- CLEANING CHEMICAL OF PLATE COOLER(KURITA)

BUSINESS

Specialized Items

CARGO HOLD CLEANING MACHINE-VULCAN PUMP (BC TAECHANG)



Long outreach,
Effective for lofty in Cargo Hold.

WATER BLASTER (BC TAECHANG)



DE rusting by high pressure fresh water.
(1,000-1,400 bar)

GARBAGE COMPACTOR(HASSWELL)



Save cost for landing garbage by reducing volume.
Available to Pale Can.

SMART SOUNDING SCALE(SEMCO)



Quick and accurate measuring.
Sensor does not reflect the "cappuccino bunker".

BUSINESS

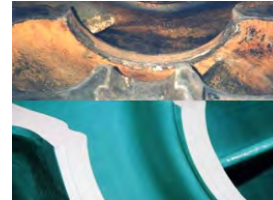
Specialized Items

BALLAST WATER MANAGEMENT SYSTEM(BSKY)



Hydro cyclone+Ultra Violet+Ultra Sonic System.
Cyclone filter can avoid clogging and also no need to replace filter.

CORROGLASS(CORROCOAT JAPAN)



Anti corrosion, anti wear,
anti-erosion by resin coating.

MGO ADDITIVE AND SPECIAL PAINTS (ACE INTERNATIONAL)

MGO ADDITIVE is useful to prevent from stick
and wear of F.O. Pump.

CERAMIC BOARD (SUNFLAME)

Save maintenance cost of Incinerator.

CLEANING CHEMICAL OF PLATE COOLER(KURITA)

Remove slime on the sea water side of Plate Cooler
without overhaul.

HEAD OFFICE	2-15, 2-CHOME, MEIWADORI, HYOGO-KU KOBE CITY HYOGO 652-0883, JAPAN TEL:078-686-0320 FAX:078-686-0332 E-mail:kew-kbsls@kunimori.co.jp
TOKYO OFFICE	7-12, 5-CHOME, SHINBASHI, MINATO-KU TOKYO,105-0004, JAPAN TEL:03-3437-5022 FAX:03-3437-5322 E-mail:kew-tksls@kunimori.co.jp
SINGAPORE	101 CECIL STREET, #16-02 TONG ENG BUILDING, SINGAPORE 069533 TEL:(65)6226-0321 FAX:(65)6226-0387 E-mail:kew-sgp@kunimori.co.jp
MANILA	ROOM NO.501, SANKO LINE BUILDING, 1631 SAN MARCELINO ST. MALATE, MANILA, PHILIPPINES 1000 TEL:(63)2-524-1806 FAX:(63)2-524-1077 E-mail:kew-mnl@kunimori.co.jp
SHANGHAI	ROOM 1613, No.1476 PUDONG AVE, (P.C.200135) SHANGHAI CHINA TEL / FAX:(86)21-58600301 E-mail:shanghai@kunimori.co.jp